

# Guardec Hygienic Walls

A superior line of defence for clean,  
healthy and modern interiors.





# Purely perfect solutions for healthy interiors

Inteviron provides simple, inspired solutions for interiors that demand the perfect blend of hygiene, strength and style.

From the finest healthcare environments to the best kitchens and leisure and lifestyle facilities, Inteviron's innovative building products are designed to protect, perform, last and look good.

With a choice of antimicrobial and antibacterial properties, our solutions provide exceptional protection against the growth of bacteria, fungi, and microorganisms.

Our team combines its expertise in hygiene risk management with a keen understanding of building regulations and passion for contemporary design. Backed by a personal approach and unwavering support, our high standards extend to our service philosophy.

For you, this means a straightforward, no-fuss, easy process – with an outstanding, clean finish that does its job for years to come.





Guardec hygienic wall products by Inteviron add a superior line of defence for clean, healthy and modern interiors.

Our solutions – including ultra-hygienic and high-performing PVC wall cladding – prevent the spread of harmful bacteria while withstanding the most demanding conditions.

#### Perfect for:

- new buildings and areas needing the highest hygiene standards
- quality, cost-effective refurbishments that last
- minimal maintenance
- wall, corner and hallway protection for high-traffic areas and active, challenging environments
- wet areas requiring waterproofing and protection against mould and bacteria growth.

#### Perfect in:

- healthcare facilities (e.g. hospitals, aged care, surgeries and operating theatres)
- laboratories (medical and product development)
- commercial kitchens and food preparation areas
- leisure and shared facilities (e.g. gyms, change rooms, toilets)
- manufacturing facilities
- motorhomes, caravans, boats
- hotels
- funeral homes.



# A perfect blend of benefits



## Ultra-hygienic and bacteria resistant

Our Guardec hygienic wall products boast unique antimicrobial and/or antibacterial qualities, effectively preventing growth of germs and bacteria for outstanding infection control and hygiene. We use the most advanced ingredients so you, and the people who trust you, can be assured of the cleanest environment.



## Uncompromising quality

All our products are independently tested, with proven strength and superior resistance to bacteria, moisture, mould, impact and chemicals. Our products are fast earning a reputation in respected facilities and buildings throughout Australia and around the world.



## Durable and hardwearing

Almost seamless and completely grout-free, our products are incredibly resistant to knocks, force, spills, stains and scratches. They're ideal for wet or dry areas, and especially suited to high-traffic areas – acting as a protective buffer against trolleys, wheelchairs, beds and other equipment. Inteviron's Guardec hygienic wall products simply work hard so your interiors stand up to sustained use and impact.



## Easy and fast

Sophisticated solutions don't have to be complex. We make it easy to meet building regulations, choose solutions, specify products and get what you need fast. Best of all, our products are specifically designed for no-fuss installation, cleaning and maintenance.



## Stunning finish

With Inteviron, you don't have to sacrifice looks to achieve healthy, safe and high performance environments. We offer a wide range of timeless designs and colours to suit any area, from discreet style to striking statements.



## Ecofriendly

We strive to support a healthy natural environment every day. With non-timber products, our range has no impact on rainforests, and is completely recyclable at the end of its long lifespan. Post-production waste is regenerated into raw material, and the low oil content ensures minimal carbon impact.

# The perfect choice for walls

The suite of Guardec hygienic wall products are available with a choice of antimicrobial, antibacterial and stylised qualities to reliably perform and look the part in any environment.

	SilverGuard	SafeGuard	StyleGuard
PVC wall cladding	X	X	X
Wall vinyl		X	
Stainless steel sheet			

## SilverGuard

When you need the gold standard in health and hygiene, SilverGuard is the right solution.

From hospitals to laboratories, some environments demand the highest level of 'clean'. Incorporating the natural antimicrobial qualities of silver, SilverGuard PVC wall cladding brings lasting peace of mind for susceptible, high-risk areas – providing the most powerful defence against bacteria, illness and infection.

### How

Our premium SilverGuard uses Biomaster Antimicrobial Technology, reducing the growth of E.Coli, Salmonella, Listeria, MRSA and over 50 other bacteria by up to 99.99%.

This technology, with silver ion properties, takes 'antibacterial' a step further – protecting against a wider range of microbes, including fungi (mould).

Like all our products, SilverGuard doesn't need anything fussy to perform. Standard cleaning will see it provide premium lifelong protection, day after day.

Suited to the most demanding and sensitive environments, SilverGuard wall cladding is safe, strong and watertight. It fights dangerous microbes while enduring rough treatment – so they look great while resisting the hits, knocks and spills that come with the job.





## Proven

Independently tested on some of the most dangerous pathogens, SilverGuard's proactive formulation reduced viable bacteria by 80% in just 15 minutes and over 99.9% after two hours. Permanent protection was provided after 24 hours.

Results showed that SilverGuard reduced the incidence of CFUs ('colony-forming units' or 'viable cells') by at least 87%, with some microbes reduced by as much as 99.9%.

In technical terms, the active Biomaster ingredient binds to cell walls preventing growth, stops cell producing energy by interrupting enzyme production, and interrupts the cell's DNA preventing replication.

## Technical specifications

- Proprietary Anti-microbial Hygienic PVC Wall Cladding
- Blockwork/partition system and other substrates
- Lengths: 2500mm/3000mm
- Widths: 1220mm
- Thickness: 2.5mm
- Fire rating: Achieves Class 0 building regulation when installed onto a non-combustible substrate, and Class 1 Fire Rating to both BS476 part 7 surface spread of flame and BS476 part 6 for flame propagation. Safe working temperature: 60°C, Material softening point: 80°C, Flash ignition temperature: 390°C (approx), Set ignition temperature 450°C (approx). It's self extinguishing.

## Easy installation

Surfaces to be sound and free from contaminates. Dusty or friable surfaces to be stabilised using appropriate stabilised solution. Substrate must be dry – not more than 14% moisture content.

## Lifetime warranty

SilverGuard panels are designed for a lifetime of continued, powerful protection. That's what they're warranted to:

- retain their antimicrobial properties for up to 20 years.
- maintain stable colour for 10 years.

*Warranties only apply to installation and maintenance that follow Inteviron's installation instructions and specifications and are subject to our limited manufacturer warranty and any of its contained terms.*



## SafeGuard

SafeGuard delivers exceptional infection control and durability in a clean and contemporary package.

With built-in antibacterial properties, SafeGuard brings lasting confidence, real flexibility and great looks to a wide range of settings.

### How

SafeGuard wall cladding and wall vinyl incorporates Bactiban to prevent the growth of bacteria. It's an incredibly effective, safe and invisible weapon in the fight against illness and contamination.

Every day, SafeGuard work hard to protect against the spread of dangerous germs while withstanding heavy traffic, constant impact, heat, water and chemicals. But you'd never know it from their effortlessly stylish looks.

In fact, ease and versatility are at the heart of the SafeGuard range – from simple and quick installation to the wide range of colour options. Best of all, it's adaptable to suit different needs, including thermo-forming into and around corners.

### Technical specifications

- Proprietary Hygienic PVC Wall Cladding
- Blockwork/partition system
- Substrate must be dry - not more than 14% moisture content
- Length: 2500mm/3000mm
- Width: 1220mm
- Thickness: 2.5mm
- Colour: White (T10/25/WH or T10/30/WH)

### Easy installation

Surfaces to be sound and free from contaminants.

Dusty or friable surfaces to be stabilised using appropriate stabilising solution.



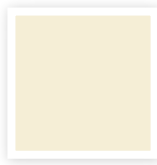


## Add a touch of colour

### Diamond White



### Ambience



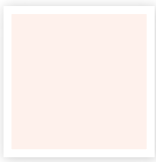
Calico



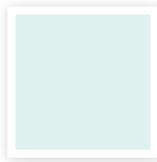
Mystique



Lilac



Orchid

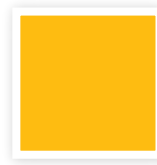


Pistachio



Stone

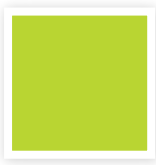
### Brilliance High Gloss



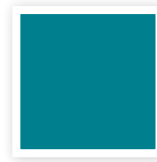
Energy



Meadow



Limelight



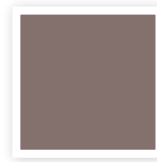
Petrol



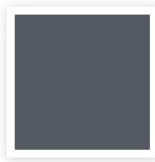
Night Shadow



Lily



Storm

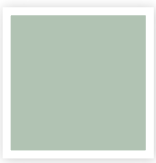


Titanium



Chestnut

### Brilliance High Gloss



Avocado



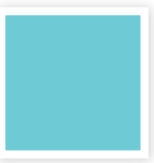
Moss



Clover



Forest



Jewel



Summer



Monsoon



Candy



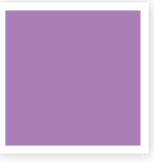
Amber



Stamina



Daydream



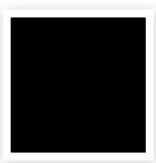
Fantasy



Emperor



Bordeaux



Panther



White Hot



Scan QR code  
to order sample



## StyleGuard

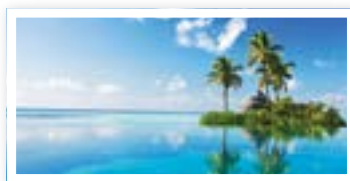
StyleGuard is where hygiene and performance meet creativity and colour.

Who knew that infection control could be so exciting! The StyleGuard wall cladding comes with the incredible protection and durability of all Inteviron products – along with standout design and impact to truly make a space your own.

## A picture says a thousand words with style



*Restaurant:*  
Full photographic wall print



*Bathroom:*  
Full photographic wall print





## How

Compatible with all Guardec cladding solutions, StyleGuard transforms your hygienic wall into a unique visual experience.

Your choice of graphics, artwork or photography is applied to the cladding – so the wall, walls or corridor ‘become’ the image. No matter how wide it is, the trims are matched perfectly for a consistent and unified result.

From food and nature to logos, city scenes and abstract images, you can choose from our wide range of backdrops or provide your own. There’s even the option of adding a strong, scratch-resistant laminate coating for extra protection and shine.

No matter what your setting, StyleGuard can help bring your mission, culture or brand to life – while protecting the health and wellbeing of your stakeholders.

## Technical specifications

We want your wall to look amazing, so we need to specify a couple of things about images you supply.

- Size: a minimum of 150dpi when used at actual size.
- Image type: CMYK: JPEG, TIFF or PDF



*Hotel Bar:*  
Full photographic wall print



*Gymnasium:*  
Full photographic wall print



# Select the healthy choice for your next interior

## Contact us today

T 07 4633 5054

F 07 4633 5035

W [www.inteviron.com.au](http://www.inteviron.com.au)

720 Greenwattle Street,  
Toowoomba QLD 4350 Australia  
P.O. Box 519 Toowoomba BC QLD 4350



Scan QR code to  
view our website